



TEXAS RE

Tips for CIP-014

Navila Rahman
O&P Compliance Engineer I

June 27, 2024

CIP-014-3 Overview

Purpose

To identify and protect transmission stations and Transmission substations, and their associated primary control centers, that if rendered inoperable or damaged could result in widespread instability, uncontrolled separation, or Cascading within an Interconnection.

Requirement

Each Transmission Owner shall perform an initial risk assessment and subsequent risk assessments of its Transmission stations and Transmission substations (existing and planned to be in service within 24 months) that meet the criteria specified in Applicability Section 4.1.1. The initial and subsequent risk assessments shall consist of a transmission analysis or transmission analyses designed to identify the Transmission station(s) and Transmission substation(s) that if rendered inoperable or damaged could result in widespread instability, uncontrolled separation, or Cascading within an Interconnection.



Applicability

Transmission Owner (TO)

Identify Transmission station(s)
and Transmission substation(s)
that require CIP-014-3 R1 study

Periodically review CIP-014-3 R1
study applicability



Risk Assessment

Provide sufficient technical justification for study decisions to demonstrate their assessment of instability, uncontrolled separation, or Cascading

The risk assessment should employ any approach such as steady state or dynamic modeling that is comprehensible for studying and evaluating instability, uncontrolled separation, Cascading etc.

Entire Transmission station should be considered for outage, not just specific elements within it to ensure accuracy of the assessment



Exercises to Demonstrate Compliance

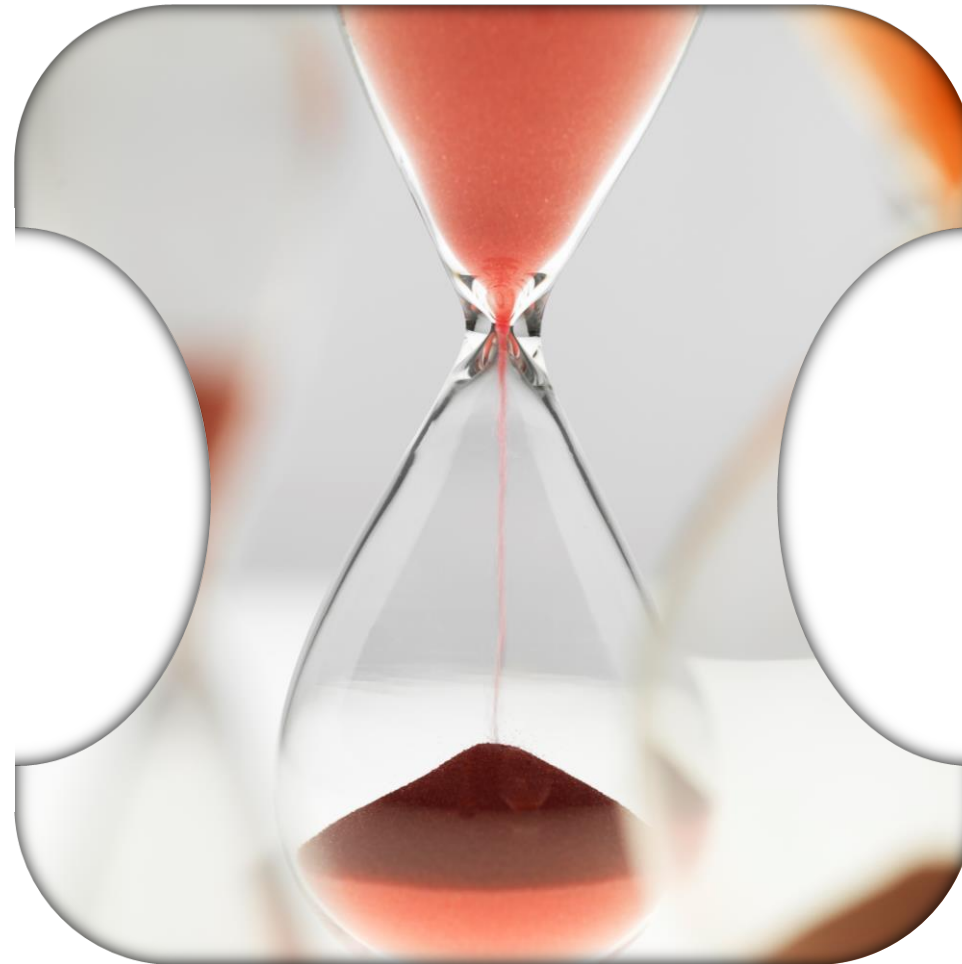
Keep thorough, dated documentation of all assessments (including initial risk assessment)

Pay close attention to the timeframes outlined in the standard/requirements, implementing internal controls such as reminders that can ensure timely completion of risk assessment

Assessment Timeframes

Subsequent risk assessment at least once every 30 months if critical assets were identified in previous assessment

Subsequent risk assessment at least once every 60 months if no critical assets were identified in previous assessment



Risk Assessment Based on Reliability Standpoint

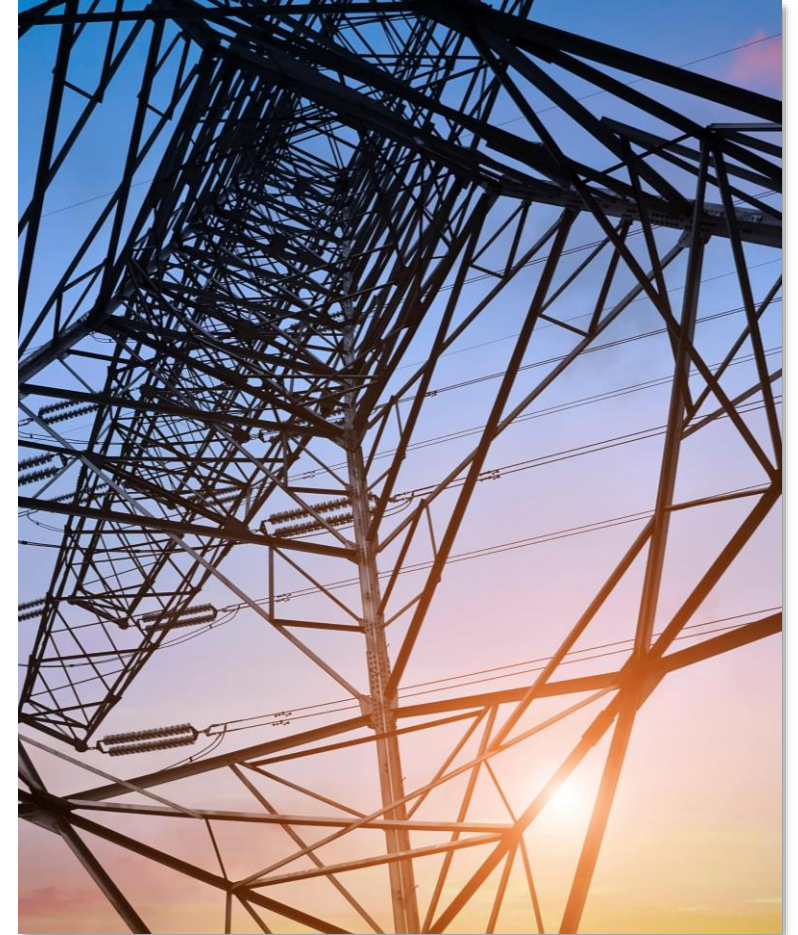
New infrastructure that is beyond
the 24-month timeframe

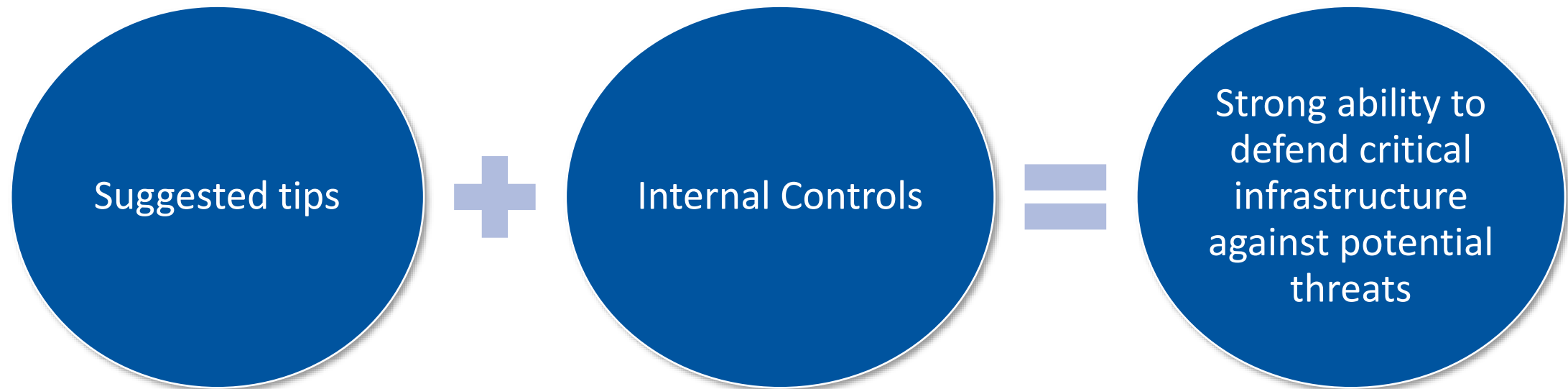


Review applicability



Immediate risk assessment is
recommended





Texas REview

CIP-014-3 R1 Practice Guide



The background of the slide features a blurred image of the Texas state flag on the left and a close-up of a wind turbine's hub and blades on the right. The blades are white with red tips. A dark blue rounded rectangle with a thin light blue border is centered over the image.

Questions?



TEXAS RE

Ensuring electric reliability for Texans