

Primary Interest Groups

Transmission Operators (TOP)

Overview

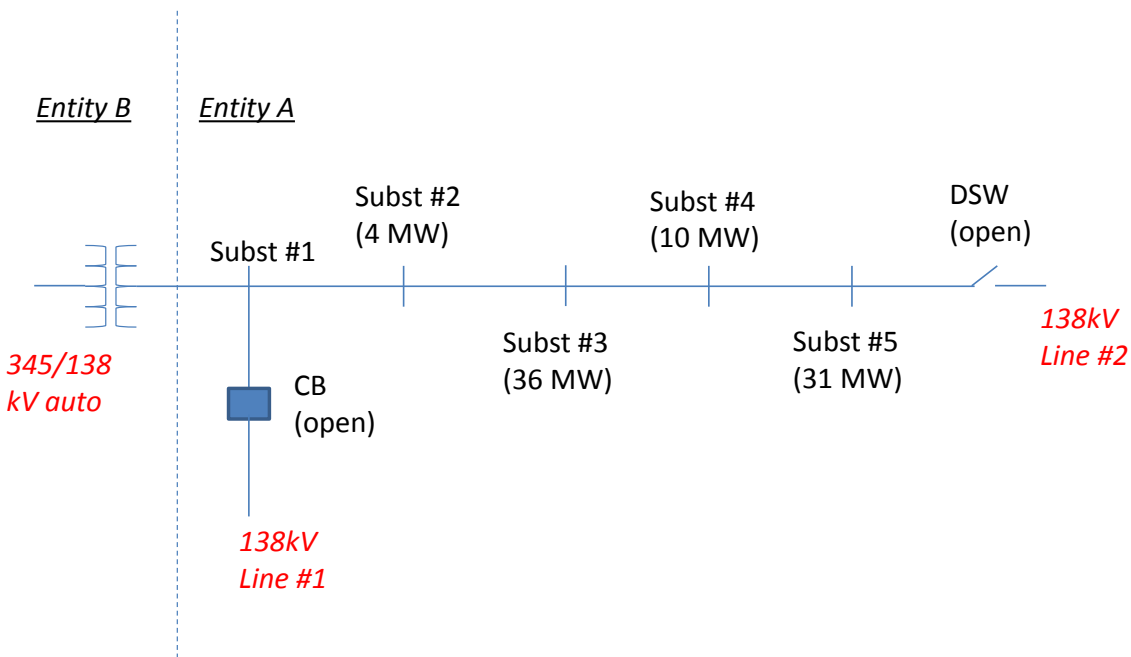
A transmission outage coordination error occurred which allowed two overlapping planned outages to be approved. Phone calls between system operators on the day of the switching failed to notice the overlap. Approximately 82 MW of load was lost for 29 minutes due to the error.

Details

Sequence of Events (reference one line diagram):

- 1) Day -107: Entity A submits outage request to remove 138kV line #1 and 138kV line #2.
Planned start: Day -76
Planned end: Day -6
Approved: Day -84
- 2) Day -55: Actual outage begins. Start delays were entered into Outage Scheduler.
- 3) Day -20: Entity B submits outage request for 345/138kV auto-transformer to begin on Day 0.
- 4) Day -9: Entity A submits outage extension until Day +25
- 5) Day -6: Entity B outage request approved
- 6) Day 0:
 - 07:53: Entity B contacts Entity A for notification of the switching
 - 08:04: Entity B isolates 345/138kV auto
 - 08:19: Entity A notifies Entity B of loss of load (~82 MW)
 - 08:27: Entity B restores 345/138kV auto
 - 08:33: All load restored

One Line Diagram:



Corrective Actions

An error in the Study Network Analysis Application was discovered which led to the inadvertent approval of the overlapping outages. This error has been corrected.

Lessons Learned

Transmission Operators are the last line of confirmation for any switching actions that occur in the field. Operators must ensure that when implementing switching actions, that system conditions accounted for include conditions due to weather, logistics, telemetry failures, forced outages, etc.

The sole purpose of this document is to provide guidance through illustrative examples. It is not intended to, nor does it, create, modify, or in any way alter any Reliability Standard or obligation of a Registered Entity or Texas Reliability Entity. Texas Reliability Entity will continue to assess compliance based on the facts and circumstances of a given situation as applied to the relevant Reliability Standards. Implementation of any suggestions or recommendations in this document does not, in and of itself, guarantee compliance to any Reliability Standard. Rather, each Registered Entity is responsible for assessing and taking all necessary actions to establish compliance with all of the requirements of all applicable Reliability Standards.